

Alliance - Enhancing Agriculture and Forestry Management through Spatial Earth Intelligence and AI

Karel Charvát, HSRS Karel Charvat Jr., Lesprojekt, Petr
Simanek, Vojtech Rybar, CVUT

Karel Jedlicka, WirelessInfo, Zbynek Slosar BadKid



Aliance

HS - RS | ČVUT - FIT | WIRELESSINFO
ZS ČR | LESPROJEKT-SLUŽBY | BADKID

PODPOŘENO GRANTEM TAČR

Introduction

- Spatial(Earth) intelligence as the capacity to visualize, manipulate, and analyze spatial data.
- Role in improving decision-making in both agriculture and forestry sectors.
- New possibilities open by AI

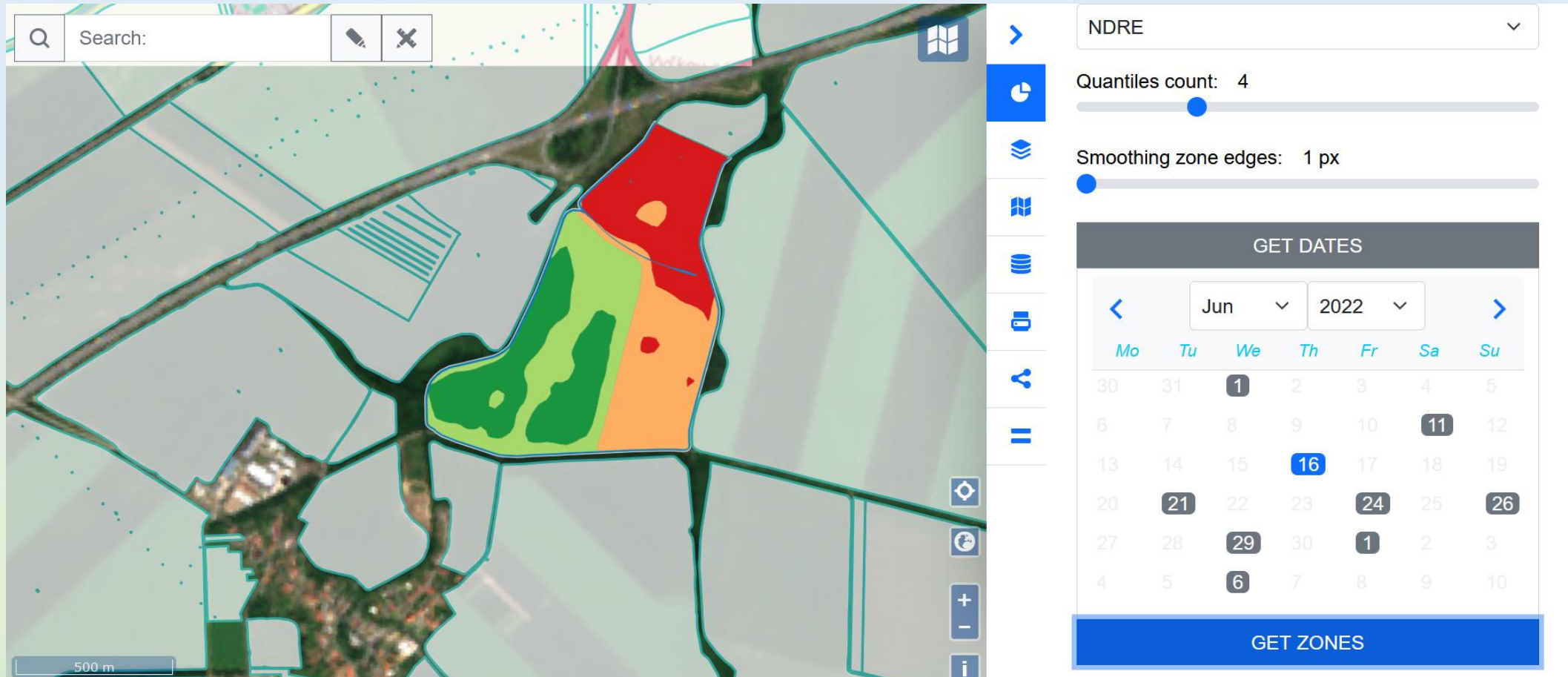
Relevance in Agriculture and Forestry

- Critical importance of spatial data in optimizing resource management and operational efficiency across both domains.
- Spatial (Earth) intelligence supports tasks such as crop mapping, forest health assessment, and sustainable land use planning.

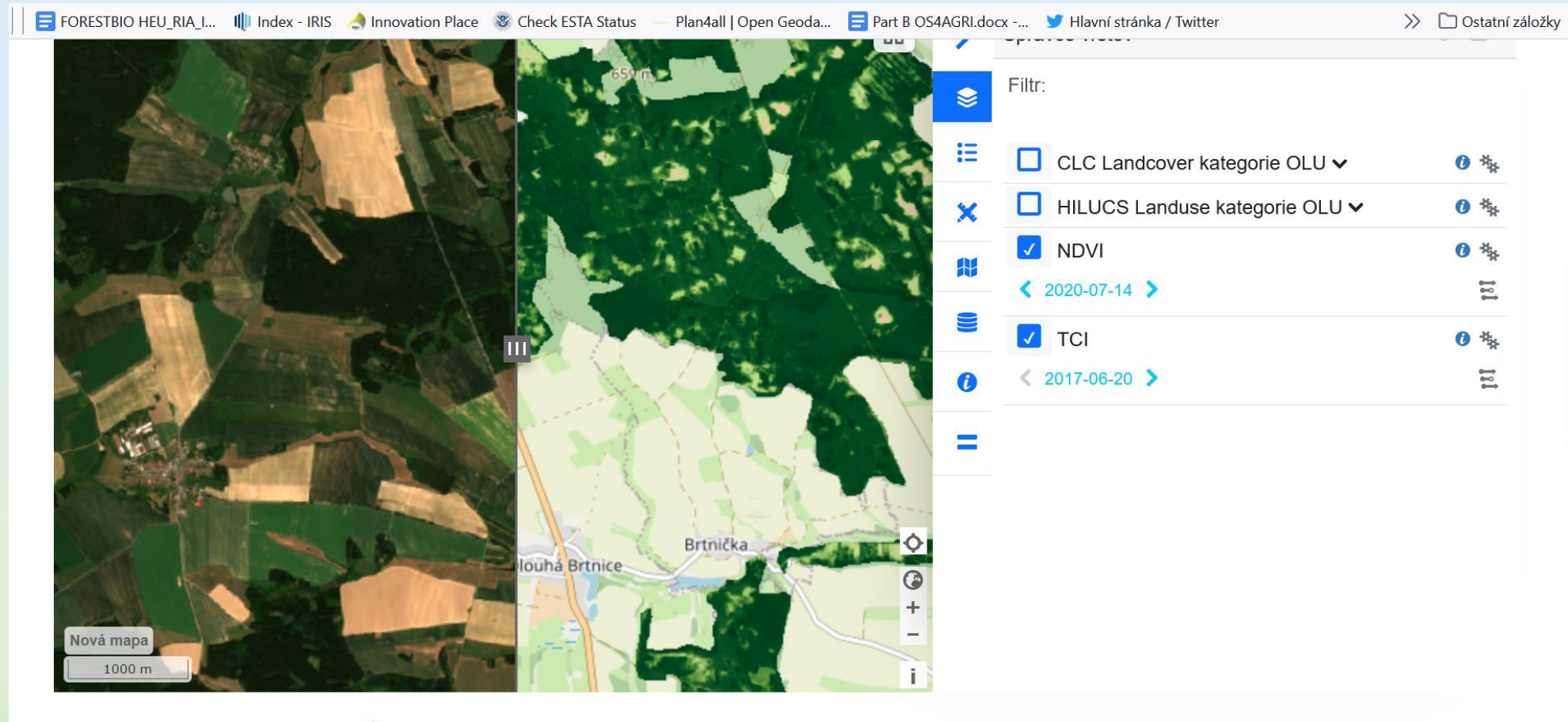
Technological Integration

- Geographic Information Systems (GIS), remote sensing, and advanced drone surveillance.
- Offering actionable insights for both agricultural and forestry management
- Integration of AI

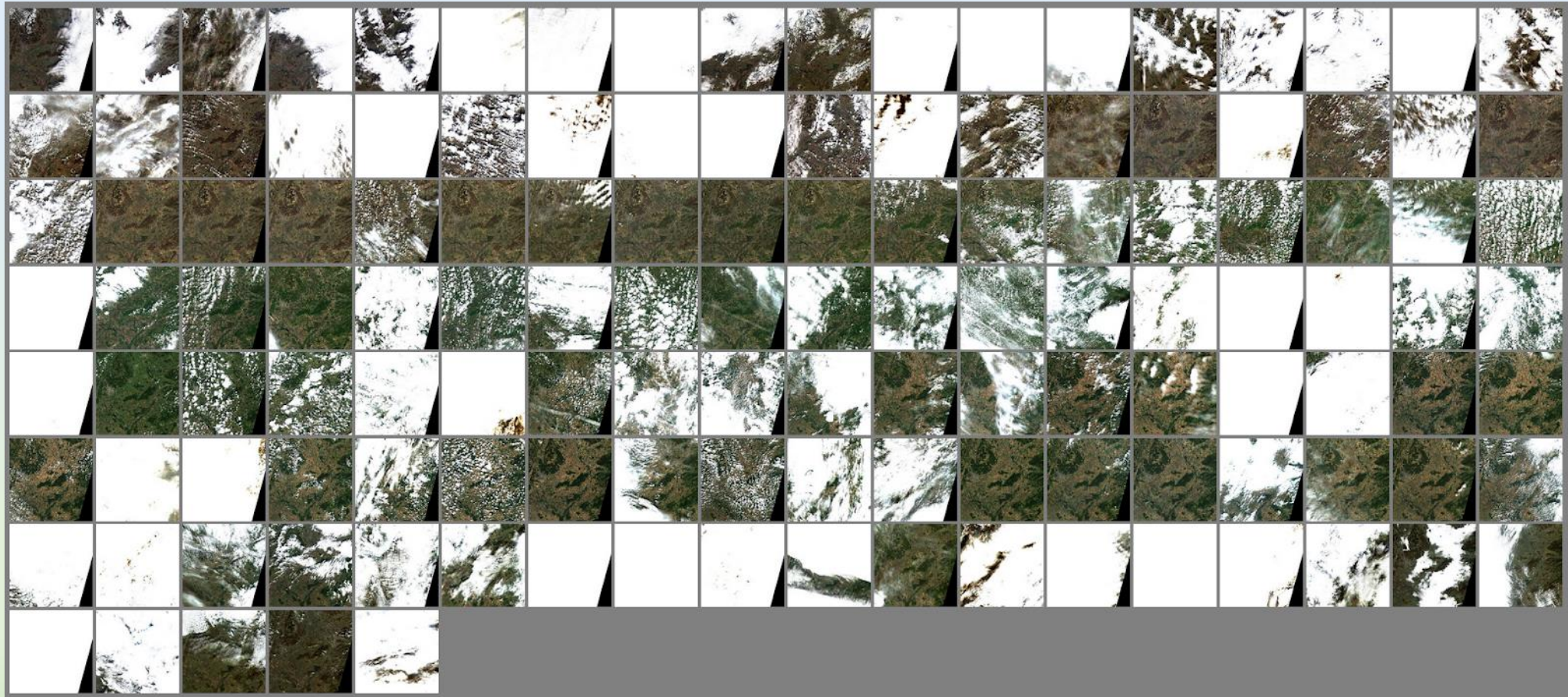
Existing technologies



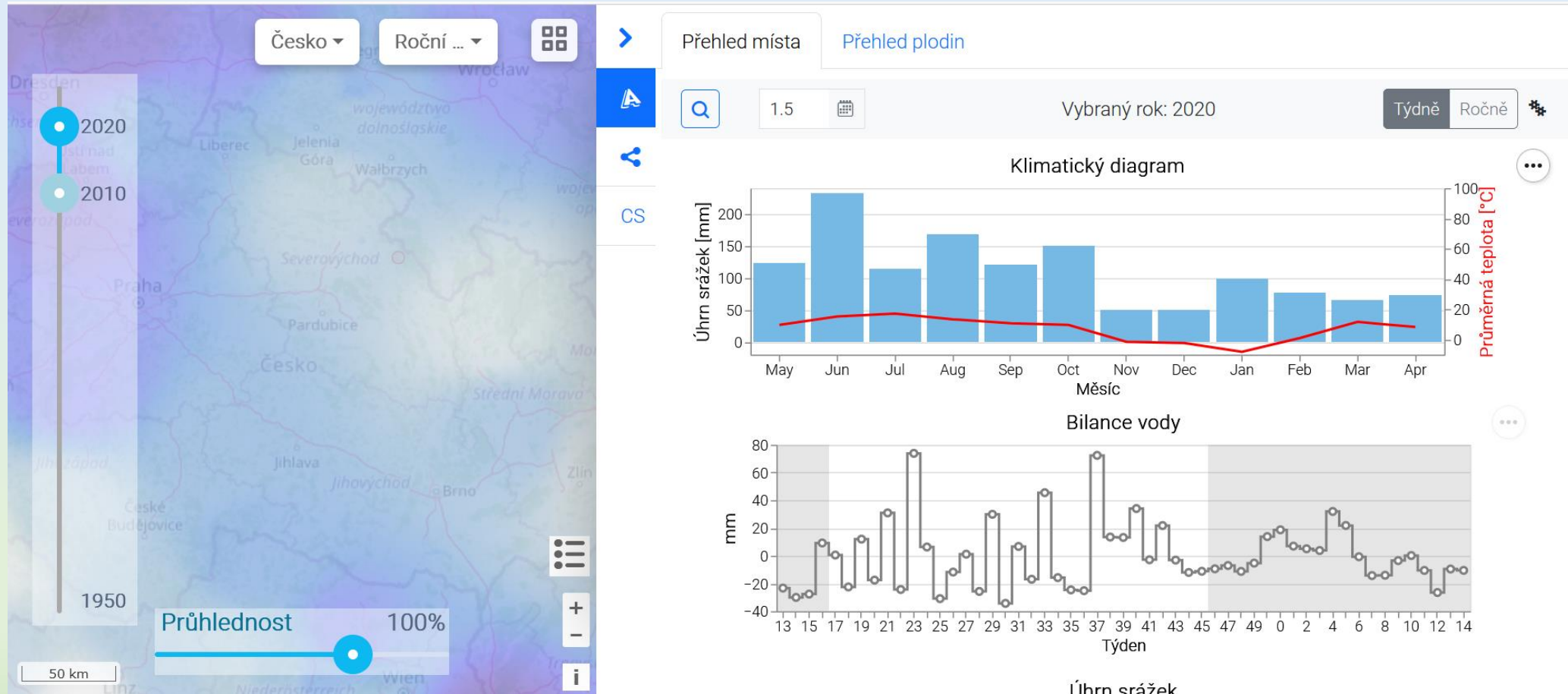
Existing technologies



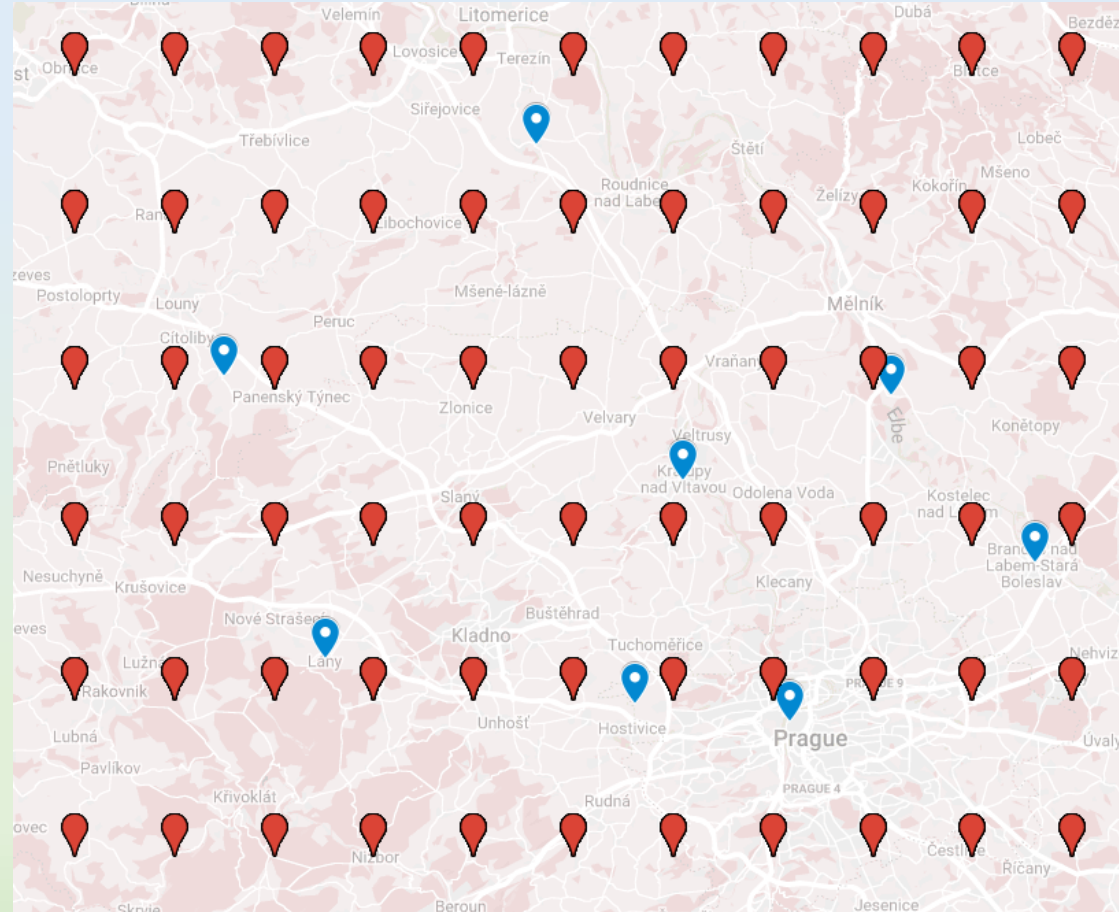
GAP



Existing technologies



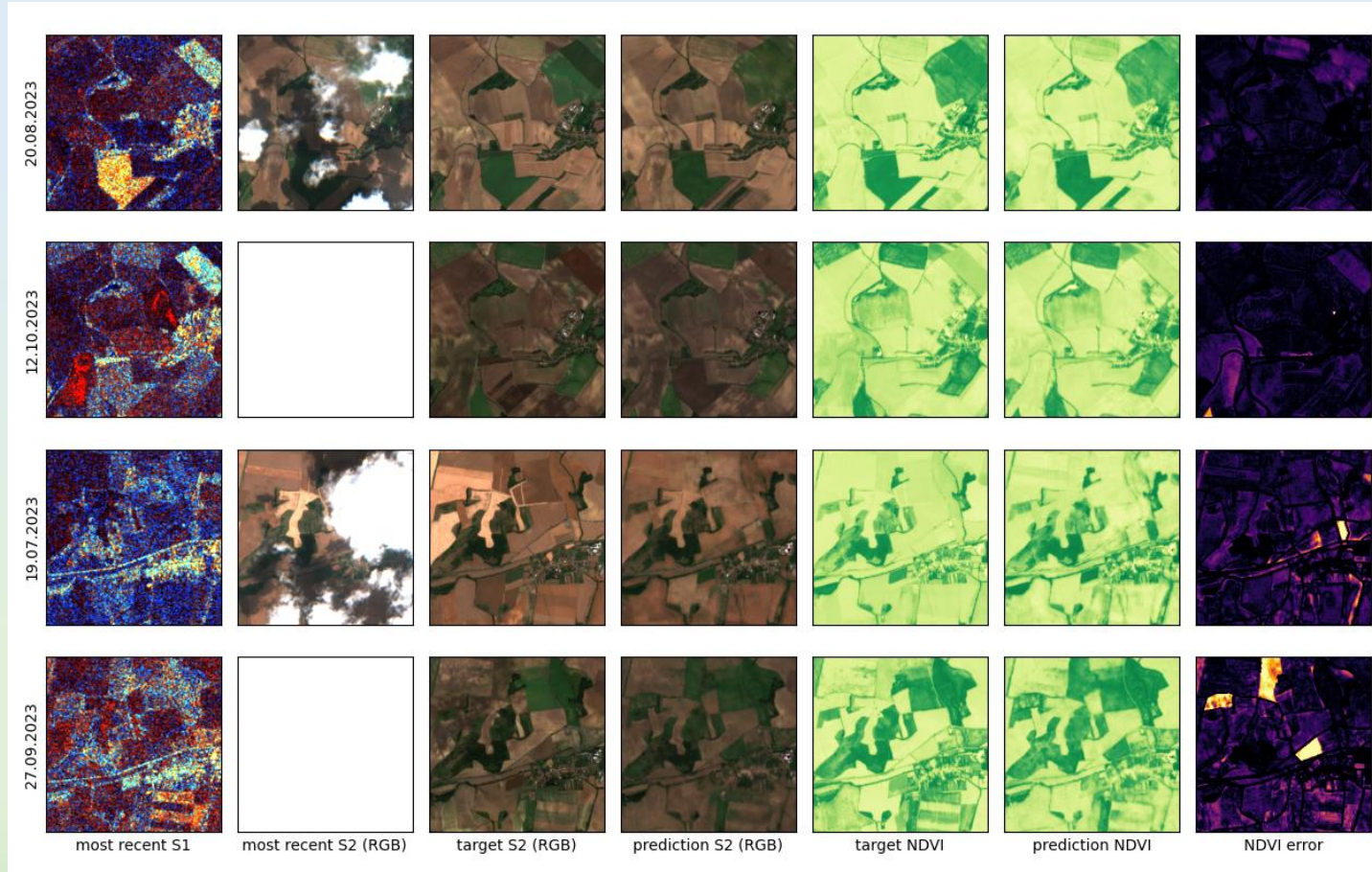
GAP



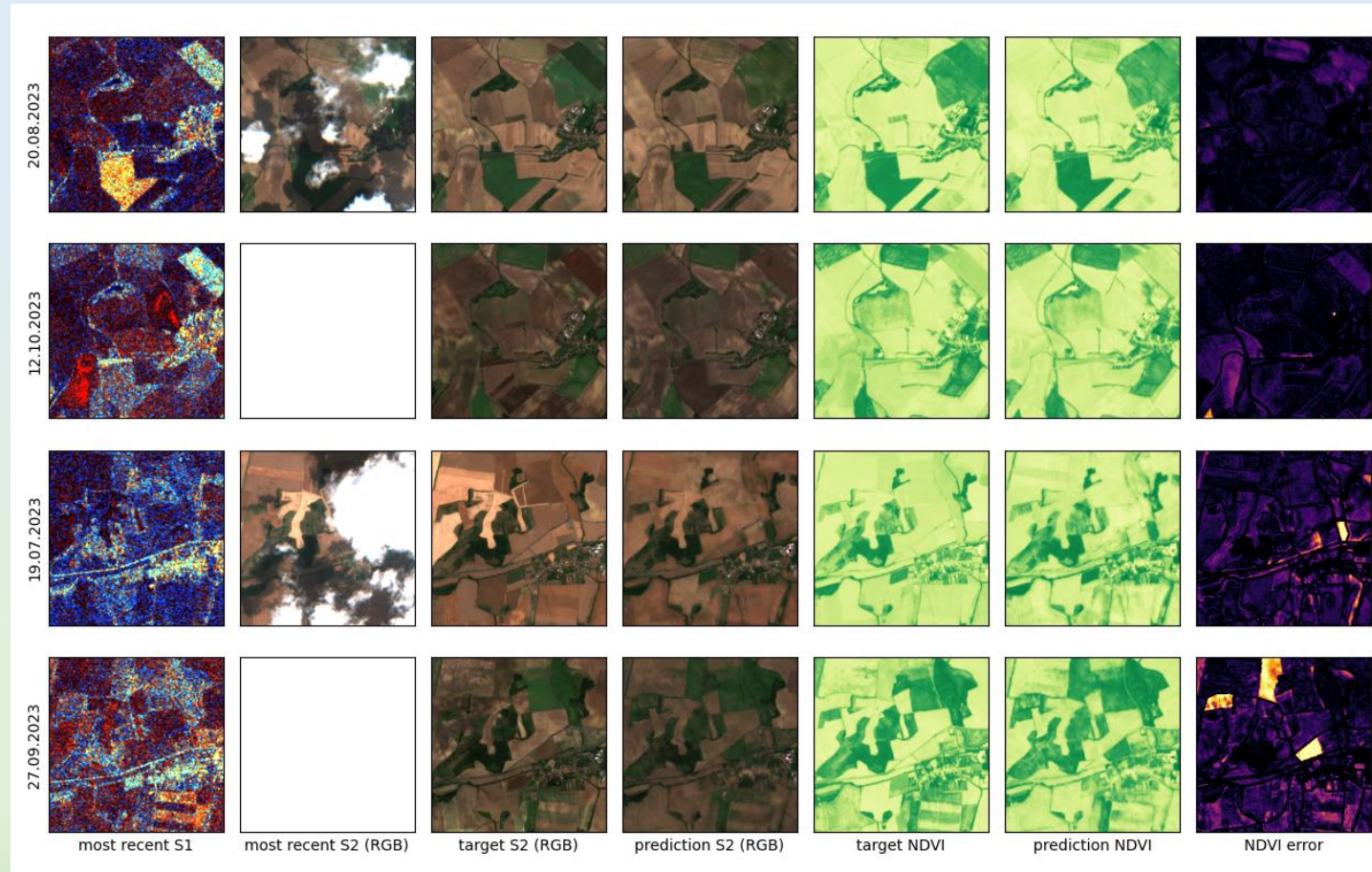
ALIANCE objective

- To explore the transformative potential of artificial **Spatial/Earth Artificial intelligence** in revolutionizing practices within agriculture and forestry, boosting productivity, and fostering environmental sustainability.
 - Develop a methodology and software for filling in missing satellite images or their parts due to cloud cover
 - Improve the accuracy and localization of weather forecasts

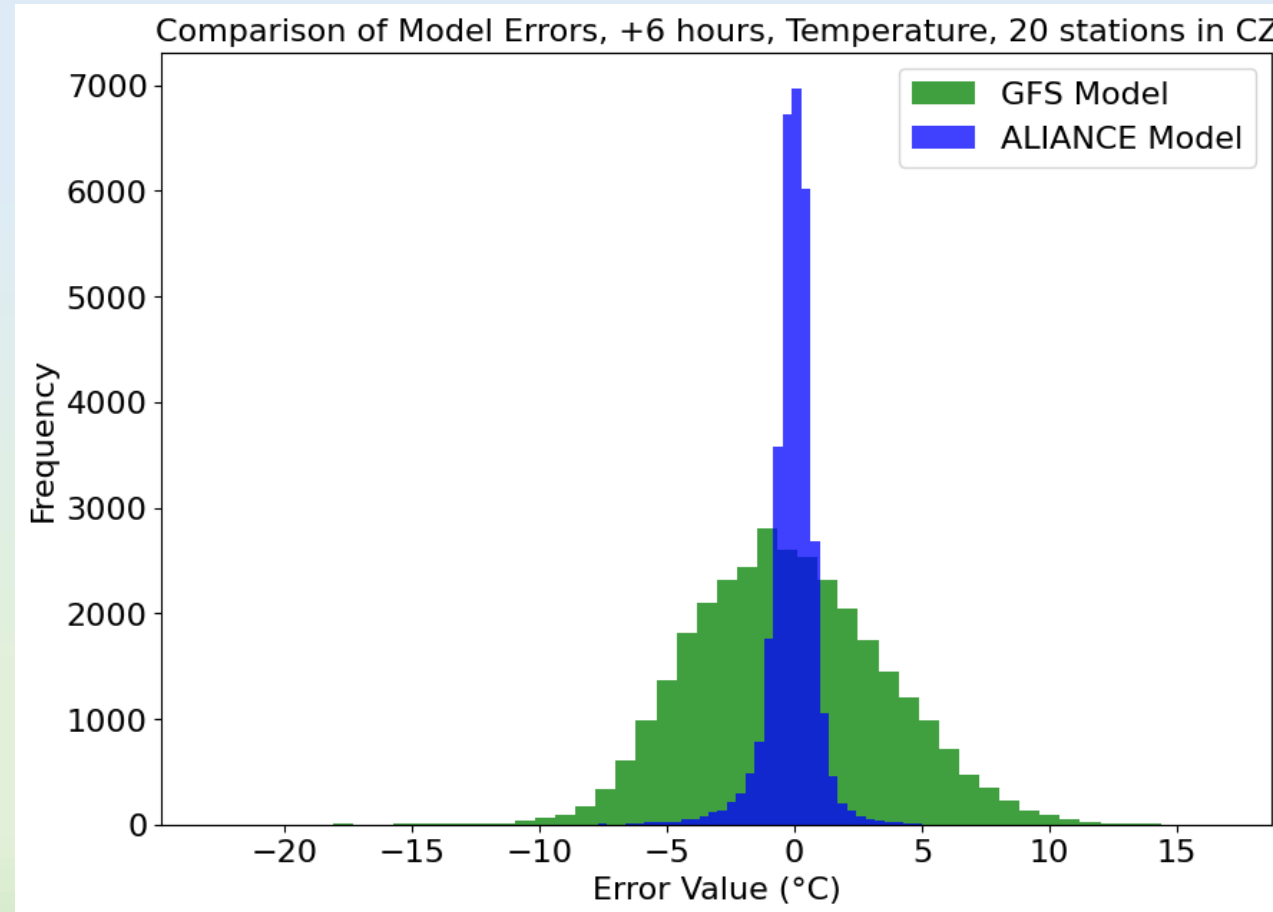
Results



Results



Results



Contact

charvat@hsrs.cz

charvat@plan4all.eu